



Real-Time Data Delivery Solution

SQData offers industrial-strength, near-real-time data integration solutions, which includes high-performance changed data capture (CDC), data replication, data synchronization, enhanced ETL and business event publishing. SQData specializes in the high-speed delivery of legacy mainframe data (IMS, DB2, VSAM, etc.) into data warehouses and downstream applications.

“Astounding Versatility...the Swiss Army Knife of Data Integration Tools”

Solution Overview

SQData’s allows you to address many different business issues with a single package, providing a comprehensive solution for changed data capture, replication, enhancing existing ETL processes, data migrations/conversions and straight ETL...all within a single package.

No longer do you have to purchase multiple products to accomplish what SQData can do for you out-of-the-box, enabling you to enjoy the consistency, performance and reliability of an industrial strength integration framework.

➤ **Real-Time Changed Data Capture (CDC)**

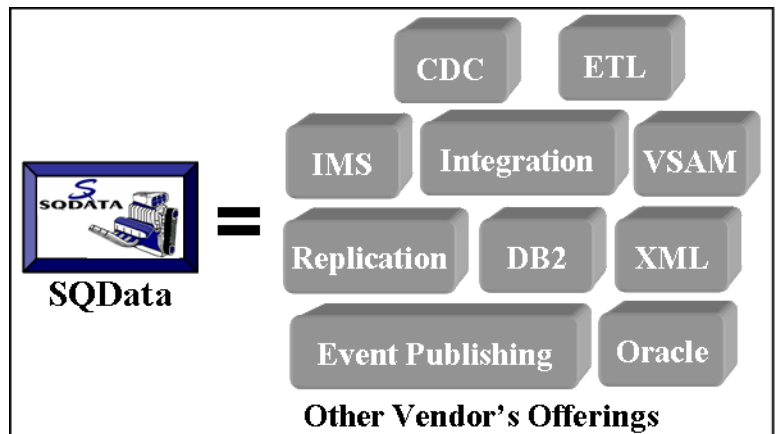
SQData offers near-real-time changed data capture for both non-relational (IMS, VSAM) and relational (DB2, Oracle) datastores. SQData’s high-performance data capture agents, coupled with our cross-platform integration engines, provide the most versatile CDC solution available.

➤ **Real-Time Replication**

SQData provides a complete end-to-end replication solution for customers who have a need to synchronize their relational and/or non-relational data with near-real-time latency.

➤ **CDC Enhanced ETL**

SQData’s CDC technology provides a solution for optimizing existing ETL processes by eliminating the need for costly bulk unloads of source data, saving significant CPU processing cycles and time. Of course, you can also use SQData for pure ETL should the need arise.



Customer Benefits

Simply stated, the SQData solution offers the best customer value available in the marketplace.

➤ **Significantly Lower Cost of Ownership**

SQData has proven to provide customers with considerable cost savings over other 3rd party integration products.

➤ **Address Multiple Business Needs**

SQData’s rich capabilities allow customers to utilize the technology for many business initiatives.

➤ **Alternative to Existing Replication and/or ETL Products**

Replacing existing replication / ETL products with SQData results in enhanced capability at a lower cost.

➤ **Rapid Deployment Time**

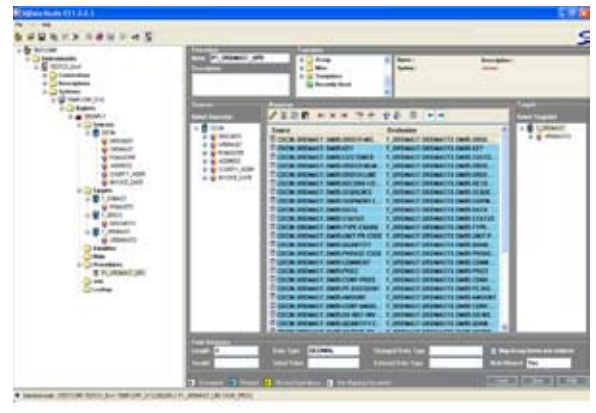
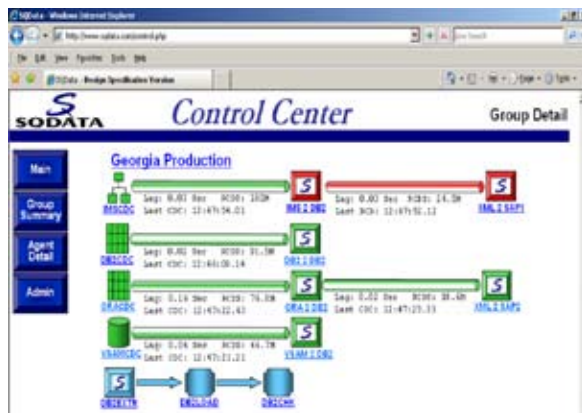
A short learning curve and eliminating of custom programs results in faster, production-ready interfaces.

“SQData Best Practices, Technology and Customer Service...the Winning Combination”

Integration Center

The SQData Integration Center is an easy to use graphical user interface (GUI) that enables you to quickly develop your data integration interfaces from a single control point. The features provided within the Integration Center include:

- **Develop, Deploy and Maintain Data Interfaces**
An easy-to-use method of rapidly developing and implementing simple and complex data interfaces.
- **Create Relational DDL, XML and C/C++ Structures from COBOL Copybooks**
Robust modeling feature creates relational table definitions or XML structures from legacy COBOL copybooks.
- **Monitor Status of Integration Engines**
Keep an eye on your operational SQData environment from a single control point.
- **Start / Stop and Display Status of Integration Engines**
Control integration engine operation and obtain runtime statistics of engine throughput.
- **Integrated Metadata Repository**
Contains critical information regarding source to target data mapping and associated business rules.



Performance Replication

SQData's high-speed, disaster tolerant replication capabilities are unparalleled as far as ease of use, quick deployment and overall reliability are concerned.

“Production Ready in as Little as 30 Days”

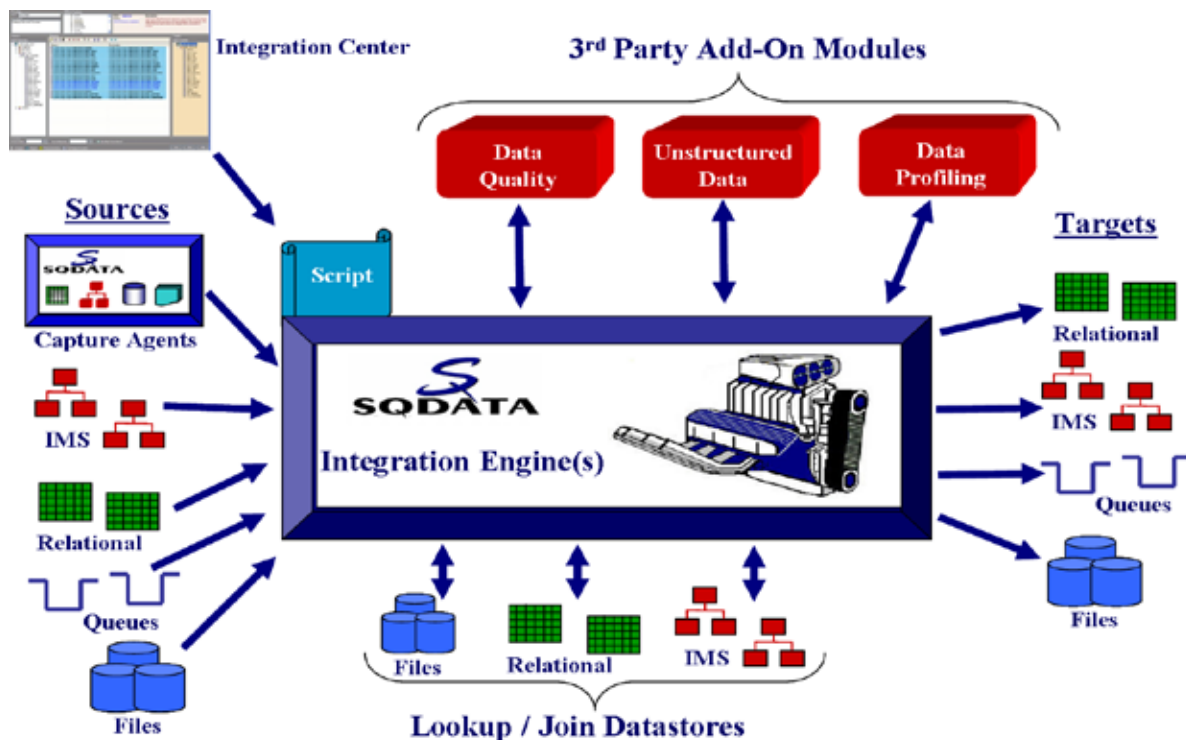
- **Multiple Replication Options**
SQData can be configured as multi-directional active-active, live standby and/or active – downstream.
- **Non-Relational and Relational Capability**
Homogeneous replication (i.e. DB2 - DB2) and/or heterogeneous replication (i.e. IMS to Oracle)...your choice.
- **Ideal Replacement for Existing Replication Products**
SQData's versatility and performance make it a perfect replacement for costly 3rd party replication tools.
- **SmartApply™ Technology**
SQData's SmartApply technology provides conflict detection and resolution within your replication framework.

Enterprise Data Integration

Enterprise-Class Integration Framework

SQData's enterprise integration framework provides the a comprehensive set of features within a single package.

- **High-Performance Changed Data Capture (CDC) and Apply**
 - Near-real-time and/or asynchronous latency
 - IMS, VSAM, DB2 (mainframe and distributed), Oracle, MySQL, SQL Server, other RDBMS.
 - Seamless cross-platform operation
- **Data Replication**
 - Multi-directional for active-active implementations
 - Conflict detection and monitoring
 - Advanced non-relational data processing capability
 - Superior relational data processing
- **Event Publishing**
 - Capture key business events (i.e. trouble tickets, customer orders, product shipment, etc.)
 - Near-real-time latency
 - Augment captured event(s) with other information obtained via lookups or joins
 - Multiple downstream delivery options including XML, binary and/or delimited.
- **Extract, Transformation and Load (ETL)**
 - Bulk data movement
 - CDC enhanced ETL lowers processing and elapsed times
 - Compatible with other 3rd party ETL tools (i.e. DataStage, Informatica, Ab Initio)
- **Data Conversions / Migrations**
 - Simplify legacy data conversions
 - Synchronization capability allows for phased cutover
 - Business logic can be reused for new datastores



SQData Solution Summary

INTEGRATION ENGINE CAPABILITY SUMMARY

General

- Concurrent operation across multiple operating system platforms
- Multi-step processes within a single script (UNION)
- Simultaneous multi-record type file handling
- Multi-level array handling (repeating groups) of source data store records/rows
- Data filtering and cleansing
- Dynamic lookup table processing
- Support for data transfer and communication using TCP/IP and MQSeries
- Preservation of referential integrity (RI) rules on target updates
- Joins / Merges of heterogeneous databases/files

Data Transformation

- Case (If/Else) logic
- Extensive date cleansing and formatting
- Arithmetic functions (add, subtract, multiply, etc.)
- Aggregation functions (sum, min, max, avg, etc.)
- Data type conversions
- String functions
- Data filtering
- XML data formatting
- Delimited data formatting

Datastore Processing

- High performance bulk data transfer
- Concurrent processing of multiple data store types
- Creation of target data stores from source data store format
- Insert / append to existing target data stores
- Update / replace existing target data stores
- Delete from existing target data stores
- New column / field creation Data Movement

Data Movement

- MQSeries
- TCP/IP
- FTP

TECHNICAL SPECIFICATION SUMMARY

Operating Systems	SQData for z/OS	SQData for Multi-Platforms
z/OS	X	
UNIX (AIX, Solaris and HP-UX)		X
Linux		X
Windows		X

Datstore Formats	SQData for z/OS	SQData for Multi-Platforms
IMS	X	
IMS Unload Utility	X	X
DB2	X	X
DB2 Unload Utility	X	X
VSAM	X	
MQSeries Queues	X	X
TCP/IP and FTP Ports	X	X
XML	X	X
Oracle		X
MySQL		X
SQL Server		X
Flat Files (fixed, delimited)	X	X

Data Structures	SQData for z/OS	SQData for Multi-Platforms
COBOL Copybooks	X	X
XML (DTD)	X	X
C/C++ Headers	X	X
Relational (DDL)	X	X
Relational DBMS Catalogs	X	X

Data Synchronization	SQData for z/OS	SQData for Multi-Platforms
IMS > IMS/DC and CICS/DLI	X	
VSAM > CICS and Batch	X	
DB2 z/OS	X	
Distributed Relational DBMS	X	
SQData CDC Records (target)	X	X

About SQData

SQData was founded in 2000 by a team of Database Software Developers and Consultants with a goal of providing customers with the most comprehensive data capture, replication and event publishing framework available.

SQData's customers tend to be large companies who have a need to integrate their legacy data with newer technologies. Companies choose SQData for its legacy data capability, reliable operation and simplicity.

For more information regarding SQData technology and professional services, please visit www.sqdata.com

SQData Corporation
4620 Sunbelt Drive Suite 202
Addison, Texas 75001
phone 866-252-3575
info@sqdata.com
www.sqdata.com